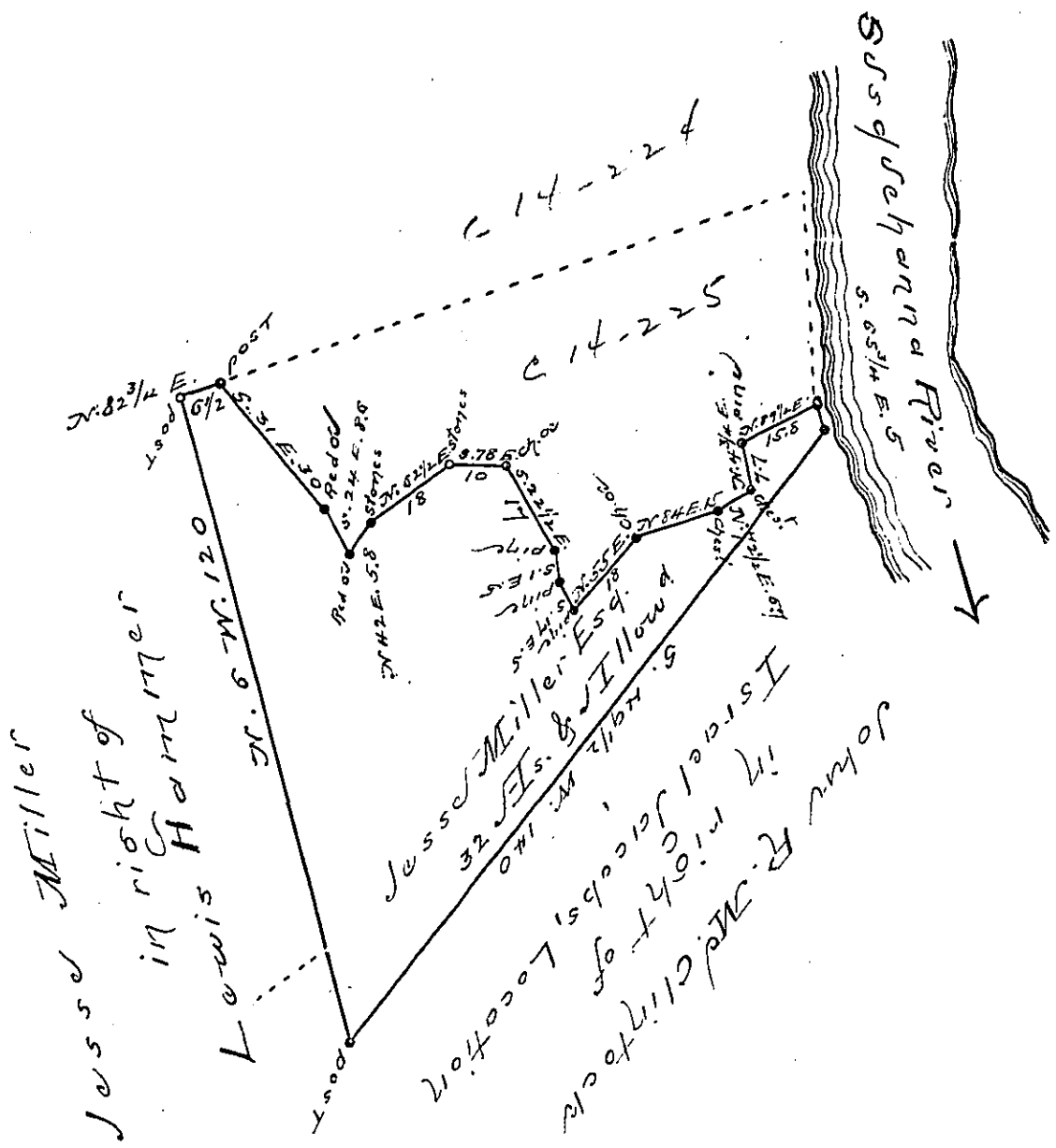


Courses & Distances

- Pt. S. 49 1/2 W. 140 Post
- N. 6 W. 120 Post
- N. 82 3/4 E. 6 1/2 Post
- S. 31 E. 30 Red Cr
- S. 24 E. 8.6 Red Cr
- N. 42 E. 5.8 Stones
- N. 62 1/2 E. 18 Stones
- S. 78 E. 10 Ch. Cr.
- S. 22 1/2 E. 17
- S. 1 E. 5
- S. 17 E. 5
- N. 55 E. 18
- N. 84 E. 15
- N. 72 1/2 E. 5
- N. 4 1/4 E. 7.7
- N. 89 1/2 E. 15
- River S. 65 3/4 E. 5



Draft of a tract of land situated in Penn Township Perry County containing Thirty two Acres and Allowance of six per cent for Roads &c. Part of 53 1/2 Acres Originally surveyed for Israel Jacobs dated June 10th 1786. The above part in black lines surveyed for Jesse Miller Esq the Owner for patenting the 11th 1869.

John Lapontz Esq }
 Surveyor General of Pa } J. Wm Wilson S.S.

IN TESTIMONY that the above is a copy of the original remaining on file in the Department of Internal Affairs of Pennsylvania, made conformably to an Act of Assembly approved the 16th day of February, 1833. I have hereunto set my Hand and caused the Seal of said Department to be affixed at Harrisburg, this

— seventh — day of — April — 1896.

James W. Fatta
 Secretary of Internal Affairs.